

# SPECIAL DELIVERY PROTOCOL

(19 Feb 2004)

GENE TOOLS, LLC

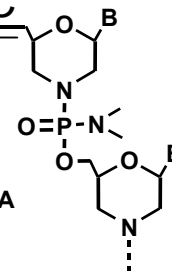
Phone: (541) 929-7840

Fax: (541) 929-7841

Web: [www.gene-tools.com](http://www.gene-tools.com)

Email: [mail@gene-tools.com](mailto:mail@gene-tools.com)

Mail: One Summerton Way  
Philomath, OR 97370 USA



## I. INTRODUCTION

Special Delivery Morpholino oligos from Gene Tools have become an established method for delivering Morpholino oligos into cultured cells. The Special Delivery formulation provides substantially improved delivery into the cytosol/nuclear compartment of both adherent and suspension cells compared to previous scrape and osmotic delivery methods.

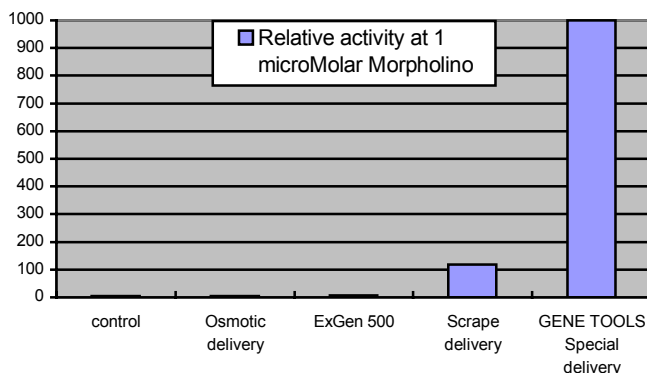
The Special Delivery Formulation consists of two components. One component comprises a pre-paired duplex of Morpholino oligo and partially complementary DNA oligo (A **green dot** should be attached to the bottom of the vial and “-D” should appear in the production number). The other component is a weakly basic delivery reagent, Ethoxylated Polyethylenimine (EPEI).

Delivery entails three simple steps:

- 1) Mix the Morpholino/DNA component with EPEI and incubate at room temp. 20 minutes.
- 2) Add the Morpholino/DNA/EPEI solution to your cells.
- 3) Three hours later remove the solution and replace with fresh culture medium.

The first step results in electrostatic binding of the anionic Morpholino/DNA duplex to cationic sites of the EPEI. Step 2 results in the electrostatic binding of the Morpholino/DNA/EPEI complex to anionic cell surfaces – leading to endocytosis of the complex. Subsequent acidification within the endosome ionizes additional weakly basic moieties of the EPEI, and this more extensively ionized EPEI permeabilizes the endosomal membrane causing release of the Morpholino oligo into the cytosol/nuclear compartment of the cell.

A related polyethylenimine reagent called ExGen 500 has been shown to be effective in delivering DNA into a variety of widely used tissue culture cell types (<http://www.fermentas.com>). The table below compares delivery by our special delivery formulation to that of scrape delivery, osmotic delivery, and delivery using ExGen 500.



## **II. PREPARATION AND DELIVERY**

### **A. What GENE TOOLS provides**

GENE TOOLS provides 300 nanoMoles of sterile pre-quantitated Special Delivery Morpholino oligo pre-paired with a partially complementary DNA oligo. The 300 nanoMoles of pre-paired oligo is enough for treating cells in 440 wells in 24-well plates. You also receive one 5-ml vial of green EPEI Special Delivery solution, which is sufficient for treating cells in 2,000 wells of 24-well plates.

### **B. Preparing Stock Solutions**

To one vial containing 300 nMoles of Special Delivery Morpholino/DNA add 600  $\mu$ l sterile water to make a 0.5 mMolar stock solution. The green EPEI Special Delivery Solution is 200  $\mu$ Molar in EPEI. If you have purchased a 100 nanoMole vial of Special Delivery Standard control Morpholino oligo then add 200  $\mu$ l sterile water to make a 0.5 mMolar stock solution.

### **C. Materials you supply for delivery:**

1. Sterile 15.0 ml capped tubes
2. Sterile water
3. Non-adherent or adherent cells preferably at 80-100% confluency in the flask/dish of choice.
4. Prewarmed serum-free and serum-containing media for the cells you study.

### **D. Protocol for treating cells in 3 wells of a 24-well culture plate**

1. To a sterile 15 ml centrifuge tube:
  - a) Add 188.8  $\mu$ l H<sub>2</sub>O
  - b) Add 5.6  $\mu$ l of the 0.5 mMolar Special Delivery Morpholino/DNA stock solution
  - c) mix
  - d) add 5.6  $\mu$ l of the green 200  $\mu$ Molar EPEI Special Delivery solution
  - e) **Vortex immediately** and let stand at room temperature for exactly 20 minutes
2. After the 20 minute incubation above at room temp, add 1.8 ml of serum-free medium and **vortex immediately** to generate the complete delivery solution.
3. Remove media from cells (requires centrifugation in the case of non-adherent cells) and then add 500  $\mu$ l of the complete delivery solution to each of the 3 wells, briefly mix, and return to the incubator.
4. After incubation for 3 hours, remove complete delivery solution from cells and replace with fresh serum-containing medium (centrifugation is required for non-adherent cells).

Cells can be assayed as soon as 16 hours after media replacement. Morpholino oligos are stable and totally nuclease resistant so there is no need for re-delivery. In some cases turnover of the targeted protein may be slow so incubation for several days may be required to significantly reduce the level of previously synthesized protein. However, when cells are allowed

to undergo more than 5-10 divisions it may be necessary to treat again to compensate for the dilution of oligo due to cell divisions.

**E. Table for scaling the above protocol for triplicate samples in selected plates and flasks.**

<b>Solutions</b>	<b>48 well plate</b>	<b>24 well plate</b>	<b>12 well plate</b>	<b>6 well plate</b>	<b>25 cm<sup>2</sup> flask</b>	<b>75 cm<sup>2</sup> flask</b>
<b>H<sub>2</sub>O</b>	94.9 µl	188.8 µl	283.2 µl	566.4 µl	1.0 ml	3.4 ml
<b>Morph/DNA stock</b>	2.8 µl	5.6 µl	8.4 µl	16.8 µl	33.6 µl	100.8 µl
<b>EPEI Special Delivery solution</b>	2.8 µl	5.6 µl	8.4 µl	16.8 µl	33.6 µl	100.8 µl
<b>Serum-free medium</b>	0.9 ml	1.8 ml	2.7 ml	5.4 ml	10.8 ml	32.4 ml
<b>Aliquot per well or flask (3 samples)</b>	0.25 ml	0.5 ml	0.75 ml	1.5 ml	3.5 ml	11 ml

**F. Storage of reagents**

The EPEI Special Delivery Solution and the Morpholino/DNA stock solution should be stored tightly capped at 4 °C. Freezing and thawing of the Morpholino/DNA stock solution should not adversely affect results.

**G. Troubleshooting and Optimization**

1. The EPEI Special Delivery Solution is killing more than 40% of the cells.

First make sure that you used the right amount of EPEI Special Delivery Solution for your scaled experiment (see table above). Second, make sure you are not using cells that were confluent more than a day. Such cells tend to be very sensitive to changes in conditions. Finally, you can reduce the Morpholino/DNA stock and EPEI stock together by as much as 1/3 and still achieve respectable delivery. For example with 24 well plates (see table above) you could reduce the volumes of the Morpholino/DNA stock and EPEI Special Delivery solution to 3.7 µl each. We have found for particularly sensitive cells (i.e. neuroblastoma and MDAMB231 cells) that reducing the EPEI volume to 4.0 µl and increasing the Morpholino/DNA volume to 10.0 µl has not only eliminated toxicity but resulted in significant delivery. Since the product has not been tested in all cell types, it is possible that your cells are not amenable to delivery by EPEI Special Delivery Solution. In such an event, if the cells are adherent you can utilize scrape delivery to achieve respectable results. The DNA partially paired to Morpholino oligo does not interfere with scrape delivery of the Morpholino oligo.

2. Can I optimize delivery for the cells I study?

You may be able to achieve better delivery by varying the concentration of EPEI in your preparations, but excessive EPEI may result in increased toxicity. We suggest that you use the Morpholino/DNA amounts listed in the table above, but vary the EPEI volumes in 10% increments (change H<sub>2</sub>O volumes accordingly). Alternatively you can vary the Morpholino/DNA and EPEI Special Delivery solution by equivalent 10% increments. Watch for toxicity. You may wish to accept some cell toxicity in order to achieve greater delivery.

## H. Reference

Description of Special Delivery system:

Morcos, P.A. (2001) Achieving Efficient Delivery of Morpholino Oligos in Cultured Cells. *genesis* 30(3), 94-102.

- Adini I, Rabinovitz I, Sun JF, Prendergast GC, Benjamin LE. *Genes Dev.* 2003 Nov 1;17(21):2721-32.
- Anant S, Henderson JO, Mukhopadhyay D, Navaratnam N, Kennedy S, Min J, Davidson NO. Novel role for RNA-binding protein CUGBP2 in mammalian RNA editing. *J Biol Chem.* 2001 Dec 14;276(50):47338-51.
- Arora V, Cate ML, Ghosh C, Iversen PL. *Drug Metab Dispos.* 2002 Jul 1;30(7):757-762.
- Bartoe JL, Nathanson NM. *Brain Res Mol Brain Res.* 2002 Nov 15;107(2):108-19.
- Blanc V, Navaratnam N, Henderson JO, Anant S, Kennedy S, Jarmuz A, Scott J, Davidson NO. *J Biol Chem.* 2001 Mar 30;276(13):10272-83.
- Bota DA, Davies KJ. *Nat Cell Biol* 2002 Sep;4(9):674-680.
- Braun S, Hanselmann C, Gassmann MG, auf dem Keller U, Born-Berclaz C, Chan K, Kan YW, Werner S. *Mol Cell Biol.* 2002 Aug;22(15):5492-505.
- Cook-Mills JM, Johnson JD, Deem TL, Ochi A, Wang L, Zheng Y. *Biochem J.* 2004 Mar 1;378(Pt 2):539-47.
- Gabellini D, Green MR, Tupler R. *Cell.* 2002 Aug 9;110(3):339-48.
- Gromley A, Jurczyk A, Sillibourne J, Halilovic E, Mogensen M, Groisman I, Blomberg M, Doxsey S. *J Cell Biol.* 2003 May 12;161(3):535-45.
- Jiang K, Pereira E, Maxfield M, Russell B, Goudelock DM, Sanchez Y. *J Biol Chem.* 2003 Jul 4;278(27):25207-17.
- Jin Y, Gallagher PJ. *J Biol Chem.* 2003 Dec 19;278(51):51587-93.
- Jost JP, Oakeley EJ, Zhu B, Benjamin D, Thiry S, Siegmann M, Jost YC. *Nucleic Acids Res* 2001 Nov 1 29(21):4452-4461.
- Kaushik R, Yu F, Chia W, Yang X, Bahri S. *Mol Biol Cell.* 2003 Aug;14(8):3144-55.
- Lemjabbar H, Li D, Gallup M, Sidhu S, Drori E, Basbaum C. *J Biol Chem.* 2003 Jul 11;278(28):26202-7.
- Li FQ, Person RE, Takemaru KI, Williams K, Meade-White K, Ozsahin AH, Gungor T, Moon RT, Horwitz M. *J Biol Chem.* 2004 Jan 23; 279(4): 2873-2884.
- Lin M, Zhu MX, Rikihisa Y. *Infect Immun.* 2002 Feb;70(2):889-98.
- Liu Y, Sinha S, Owens GK. *J Biol Chem.* 2003 Nov 28; 278(48): 48004-11.
- Lin Y, Zhu X, McLntee FL, Xiao H, Zhang J, Fu M, Chen YE. *Arterioscler Thromb Vasc Biol.* 2004 Feb;24(2):257-63.
- Mazanet MM, Hughes CC. *J Immunol.* 2002 Oct 1;169(7):3581-8.
- Mukhopadhyay D, Houchen CW, Kennedy S, Dieckgraefe BK, Anant S. *Mol Cell.* 2003 Jan;11(1):113-26.
- Munshi C, Graeff R, Lee HC. *J Biol Chem.* 2002 Dec 20;277(51):49453-8.
- Nishi E, Prat A, Hospital V, Elenius K, Klagsbrun M. *EMBO J* 2001 Jul 2;20(13):3342-3350
- Nisoli E, Clementi E, Paolucci C, Cozzi V, Tonello C, Sciorati C, Bracale R, Valerio A, Francolini M, Moncada S, Carruba MO. *Science.* 2003 Feb 7;299(5608):896-9.
- Nlend MC, Bookman RJ, Conner GE, Salathe M. *Am J Respir Cell Mol Biol.* 2002 Oct;27(4):436-45.
- Pak JH, Manevich Y, Kim HS, Feinstein SI, Fisher AB. *J Biol Chem.* 2002 Dec 20;277(51):49927-34.
- Park SJ, Ciccone SL, Freie B, Kurimasa A, Chen DJ, Li GC, Clapp DW, Lee SH. *J Biol Chem.* 2004 Feb 13;279(7):6046-55.
- Roberts LM, Visser JA, Ingraham HA. *Development.* 2002 Mar;129(6):1487-96.
- Sartipy P, Loskutoff DJ. *J Biol Chem.* 2003 Dec 26; 278(52): 52298-306.
- Schenk PW, Boersma AW, Brandsma JA, den Dulk H, Burger H, Stoter G, Brouwer J, Nooter K. *Cancer Res.* 2001 Oct 1;61(19):6982-6.
- Shumay E, Song X, Wang HY, Malbon CC. *Mol Biol Cell.* 2002 Nov;13(11):3943-54.
- Siddall LS, Barcroft LC, Watson AJ. *Mol Reprod Dev.* 2002 Dec;63(4):413-421.
- Spagnoli A, Torello M, Nagalla SR, Horton WA, Pattee P, Hwa V, Chiarelli F, Roberts CT Jr, Rosenfeld RG. *J Biol Chem.* 2002 May 24;277(21):18860-7.
- Swertfeger DK, Bu G, Hui DY. *J Biol Chem.* 2002 Feb 8;277(6):4141-6.
- Takayama Y, Takahashi H, Mizumachi K, Takezawa T. *J Biol Chem.* 2003 Jun 13;278(24):22112-8.
- Ussat S, Werner UE, Kruse ML, Luschen S, Scherer G, Kabelitz D, Adam-Klages S. *Biochem Biophys Res Commun.* 2002 Jun 14;294(3):672-9.
- Visser JA, Olaso R, Verhoef-Post M, Kramer P, Themmen APN, Ingraham HA. *Molecular Endocrinology* 15 (6): 936-945 (2001)
- Wright EK, Goodart SA, Growney JD, Hadinoto V, Endrizzi MG, Long EM, Sadigh K, Abney AL, Bernstein-Hanley I, Dietrich WF. *Curr Biol.* 2003 Jan 8;13(1):27-36.
- Yahiro K, Wada A, Nakayama M, Kimura T, Ogushi KI, Niidome T, Aoyagi H, Yoshino KI, Yonezawa K, Moss J, Hirayama T. *J Biol Chem.* 2003 May 23;278(21):19183-9.
- Yan Y, Shirakabe K, Werb Z. *J Cell Biol.* 2002 Jul 15
- Yin KJ, Lee JM, Chen SD, Xu J, Hsu CY. *J Neurosci.* 2002 Nov 15;22(22):9764-70.